

THIS DRAWING IS UNPUBLISHED.

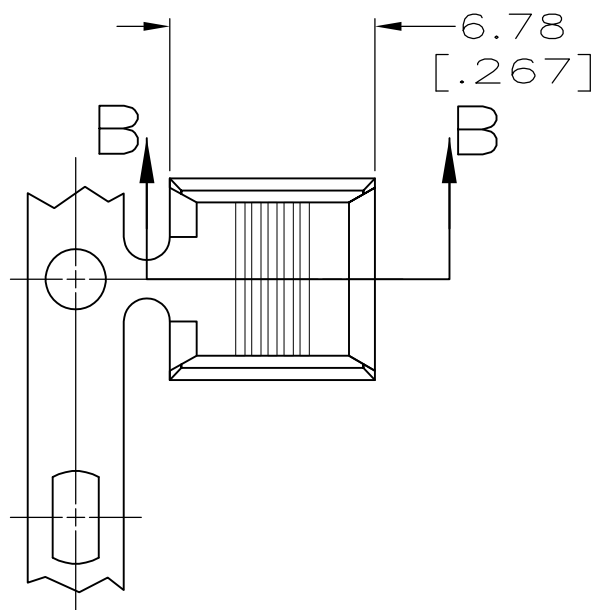
RELEASED FOR PUBLICATION

ALL RIGHTS RESERVED.

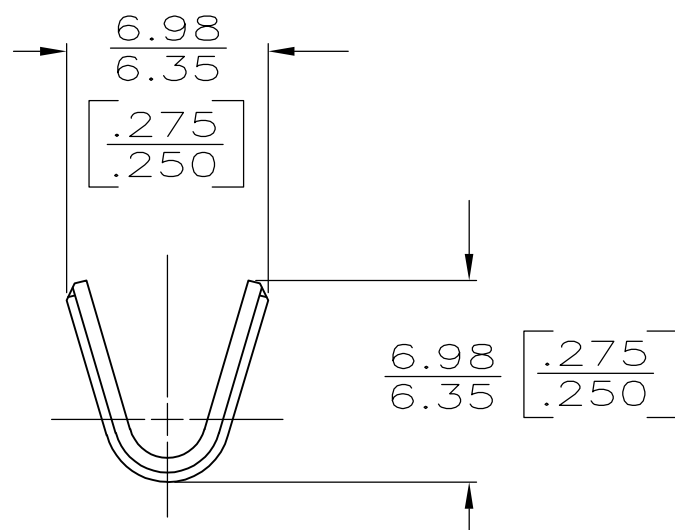
LOC AF DIST 50

REVISIONS

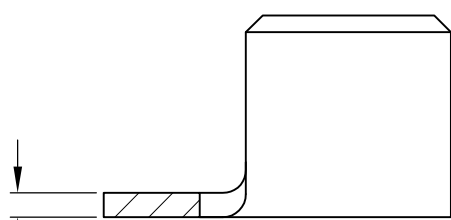
P	LTR	DESCRIPTION	DATE	DWN	APVD
	E	ECR-13-003819	06AUG13	GRZ	DZ



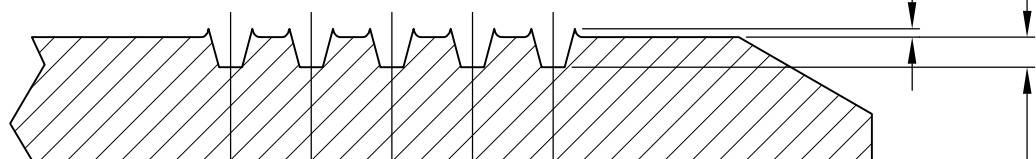
1 CONTINUOUS STRIP ON REEL.  
 2 CRIMP WIDTH: .180 F TYPE (AMPLIVAR THRU)  
 CRIMP HEIGHT ( $\pm 0.002$ ) = (TOTAL CMA + 28,700) / 317,400  
 GENERAL APPLICATION GUIDELINES MUST BE FOLLOWED AS SPECIFIED IN CATALOG #82221  
 FOR APPLICATION INFORMATION CALL: 1-800-722-1111  
 FOR PRODUCT INFORMATION CALL: 1-800-522-6752



0.80  $\pm$  0.025  
 [.032  $\pm$  .001]




0.08 MAX  
 [.003]



SECTION B-B  
 SCALE 20:1

2	10,000-16,000 CMA	63561-1
WIRE RANGE		PART NUMBER

THIS DRAWING IS A CONTROLLED DOCUMENT.		DWN 05JUN2002 MICHAEL S. FEHER	 TE Connectivity	
DIMENSIONS: mm [INCHES]		CHK 05JUN2002 GARY D. PORTA		
TOLERANCES UNLESS OTHERWISE SPECIFIED:		APVD 05JUN2002 GARY D. PORTA	NAME	
0 PLC $\pm$ - 1 PLC $\pm$ - 2 PLC $\pm$ 0.25 [.010] 3 PLC $\pm$ - 4 PLC $\pm$ - ANGLES $\pm$ -		PRODUCT SPEC	SPLICE, AMPLIVAR™, 5 SERRATIONS	
MATERIAL BRASS		FINISH TIN PLATE	APPLICATION SPEC	RESTRICTED TO
		WEIGHT -	SIZE A3	CAGE CODE 00779
		CUSTOMER DRAWING	DRAWING NO C-63561	SCALE 4:1
			SHEET 1 OF 1	REV E